

PUBLIC INVOLVEMENT MEETING

POJOAQUE VALLEY RECREATION COMPLEX PHASE 3

Thursday, May 31, 2016

6:00 - 7:00 p.m.

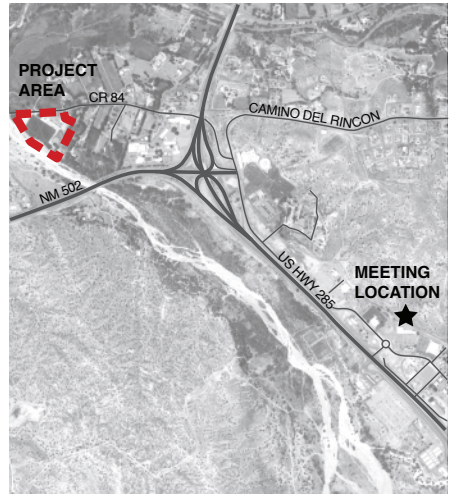
Santa Fe County Pojoaque Satellite Office

5 West Gutierrez, Suite 9

Pojoaque, NM (In the Pojoaque Pueblo Plaza)

Santa Fe County is working on improvements to the Pojoaque Valley Recreation Complex on Oweenge Road (CR 84) to better serve the Pojoaque community. Additions may include playgrounds, a tee ball field, picnic areas, sports lighting upgrades, and an agriculture demonstration garden / orchard.

You are invited to provide input on the planned improvements and design considerations important to your community. County staff and the project team will be on hand to answer questions and hear your comments.



For further information please contact the County's planning consultant, design office at: chorn@do-designoffice.com